



Interreg
North Sea Region
IMMERSE

European Regional Development Fund



EUROPEAN UNION

Integrating Stakeholders in Estuary Management Example of the Elbe Estuary (Germany)

Kirsten Wolfstein, Hamburg Port Authority (HPA), Germany



Interreg
North Sea Region
IMMERSE

European Regional Development Fund



EUROPEAN UNION

Integrating Stakeholders in Estuary Management Example of the Elbe Estuary (Germany)

Holger Rahlf, Federal Waterways Engineering and Research Institute
(BAW), Germany



Location

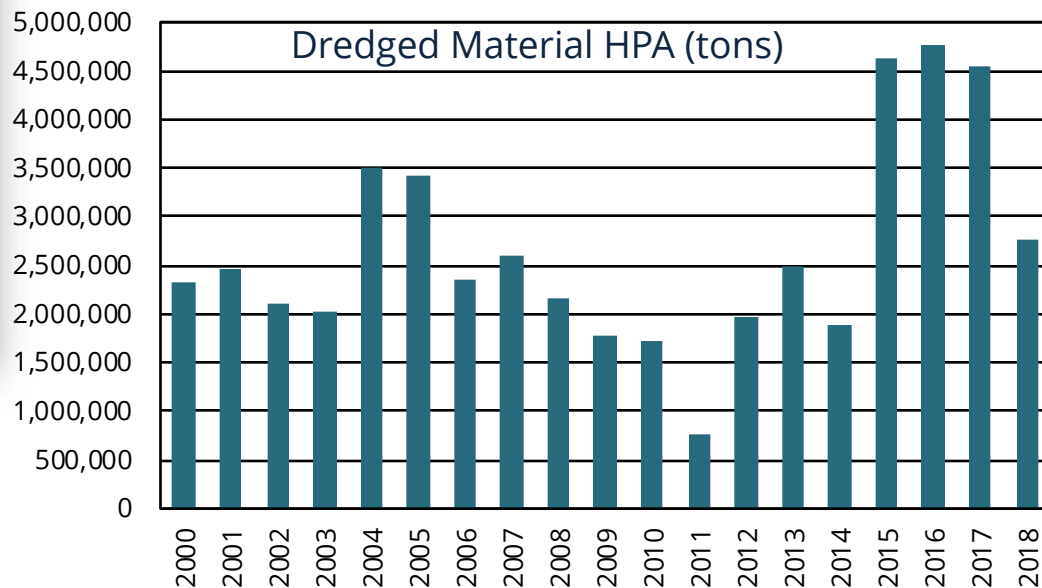




Why and when did the process start?



-> Sediment management issue





Why and when did the process start?



-> Sediment management issue

- Complex governmental situation
- Various stakeholder groups

Participation formats:

- Consultation process “Tideelbe” (2013 -2015)
(<http://www.dialogforum-tideelbe.de/>)
- “Forum Tideelbe” (2016 –2020)
(<http://www.forum-tideelbe.de/>)





Aims

1. Consultation process (2013-2015)

- achieve a better (common) understanding of all aspects of sediment management conducted by HPA and WSV (Waterways and Shipping Administration),
- improve communication between different stakeholder groups and acceptance of different interests.



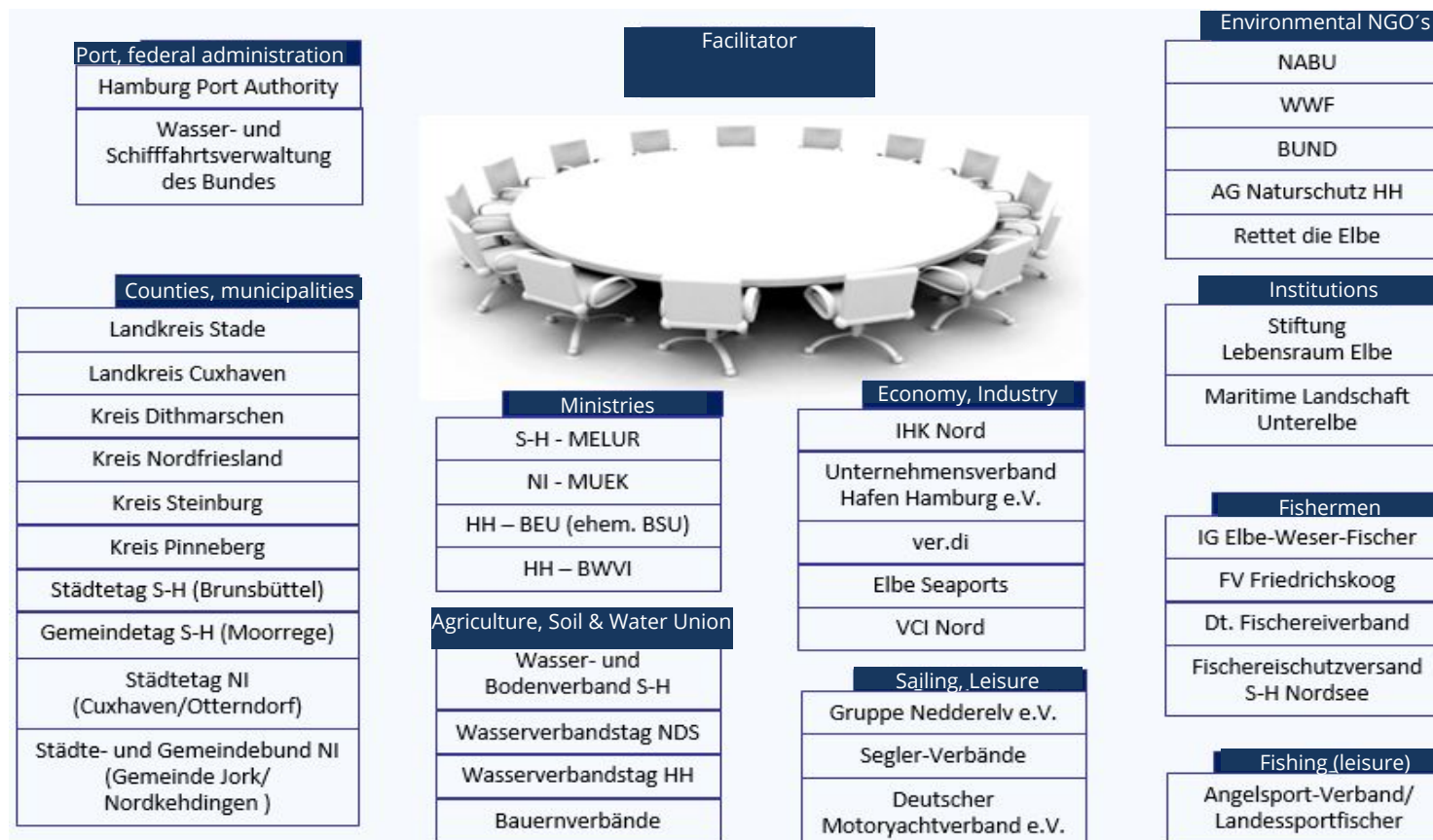
2. Estuary partnership “Forum Tideelbe” (2016-2020)

- continuation of the first process in a different way,
- find possible locations for river engineering measures that contribute to improvement of sediment management and ecological aspects of the estuary.



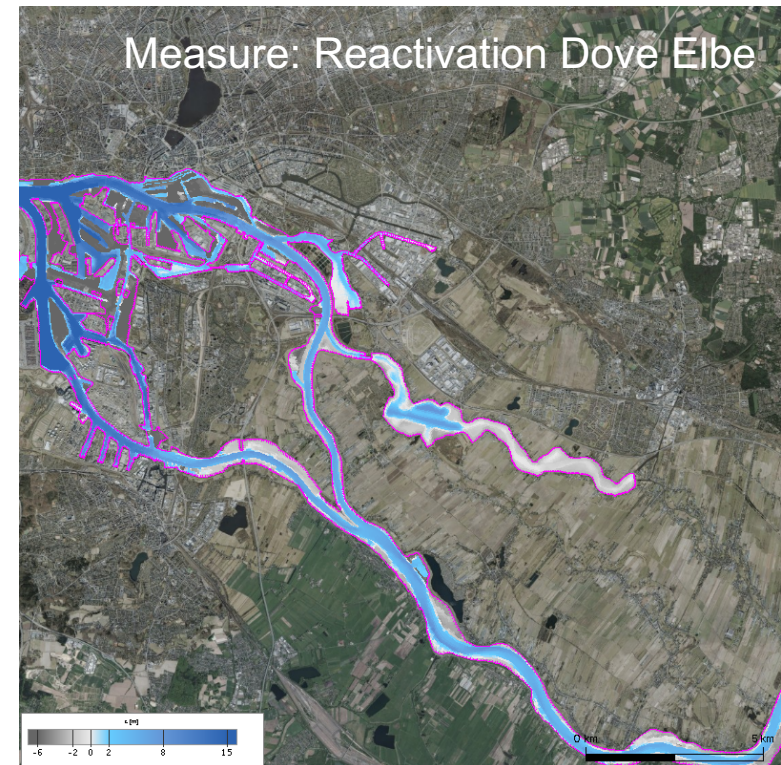


Who was/is involved?



Preliminary results


- 23 engineering measures has been discussed in the forum.
- Focus on 4 prioritised engineering measures which are suitable for reactivation of tidal areas
- Feasibility studies for those 4 engineering measures in 2019
- Final report for the policy in 2020








Experiences



- Overall positive feed-back.
- Improvement of relationships and speaking terms of involved participants during the process “now  that I know you, I realized that you are not as bad as I always thought.”



- Different level of understanding of estuarine processes  challenge.
- Process asks a lot of time & capacities  hard for some stakeholder groups.
- Achieving a result and finally starting practical works asks even more time  complaints by some groups.

Take care:

- *Rational arguments are important, but people's emotions play an important role.*
- *Mutual trust is very important.*



Thanks very much for your attention!