



**Interreg**  
North Sea Region  
**IMMERSE**

European Regional Development Fund



EUROPEAN UNION

# Port of Gothenburg

Nikol Nielsen Gulis

IMMERSE 1st Transnational Exchange Lab

12 June 2019

Gothenburg, Sweden

IMMERSE 1st Transnational Exchange Lab,  
12 June 2019

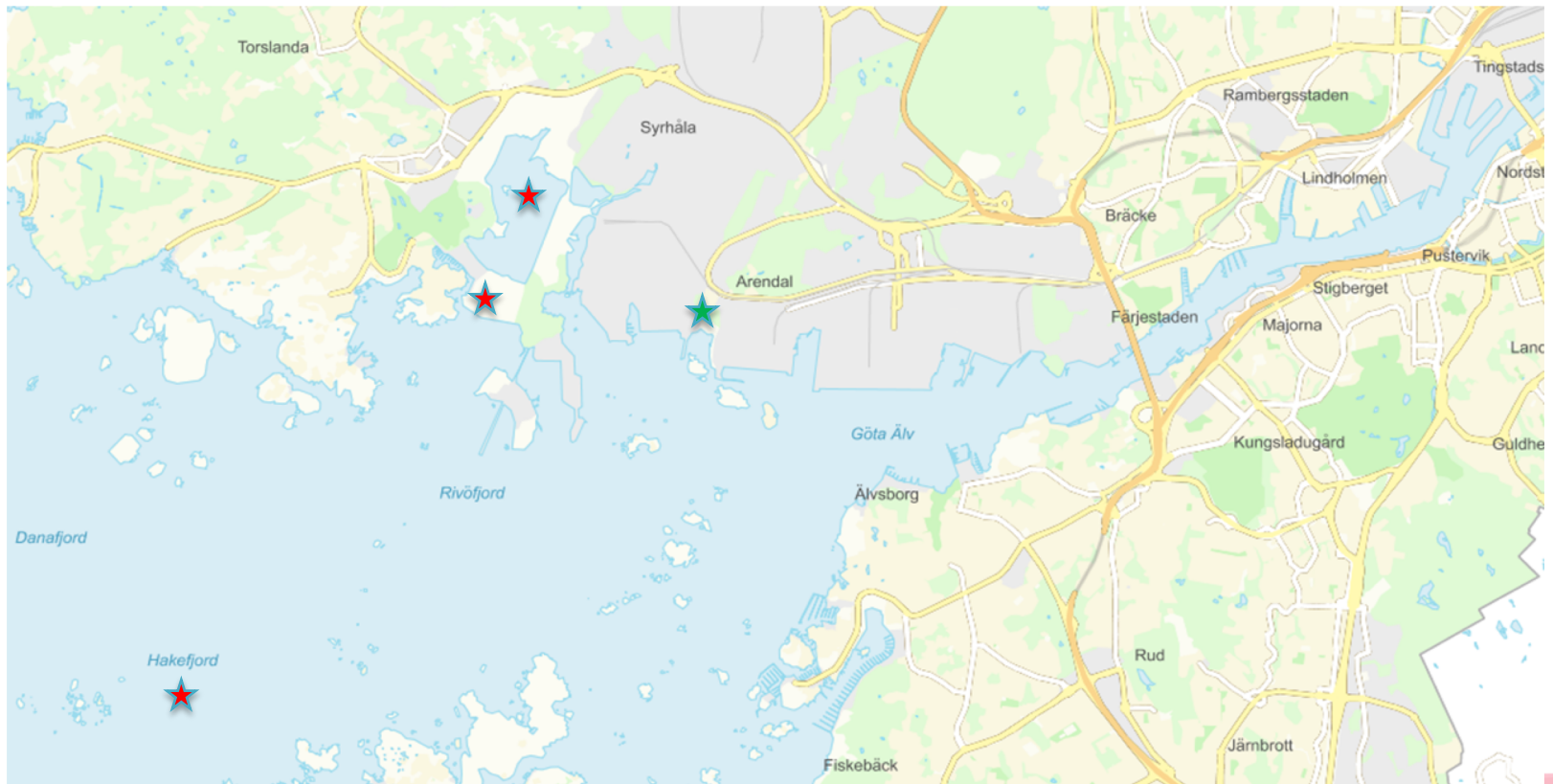


# Dredging in the Port of Gothenburg

- + Maintenance dredging every 4-5 years
- + Around 200 000 kbm
- + Mostly clay and silt
- + 75 % contaminated
- + TBT, PCB, quicksilver, Aliphatics, etc
- + Capital dredging
- + Clay and rock
- + Clean sediments



# The history of contaminated sediments







# Torsviken





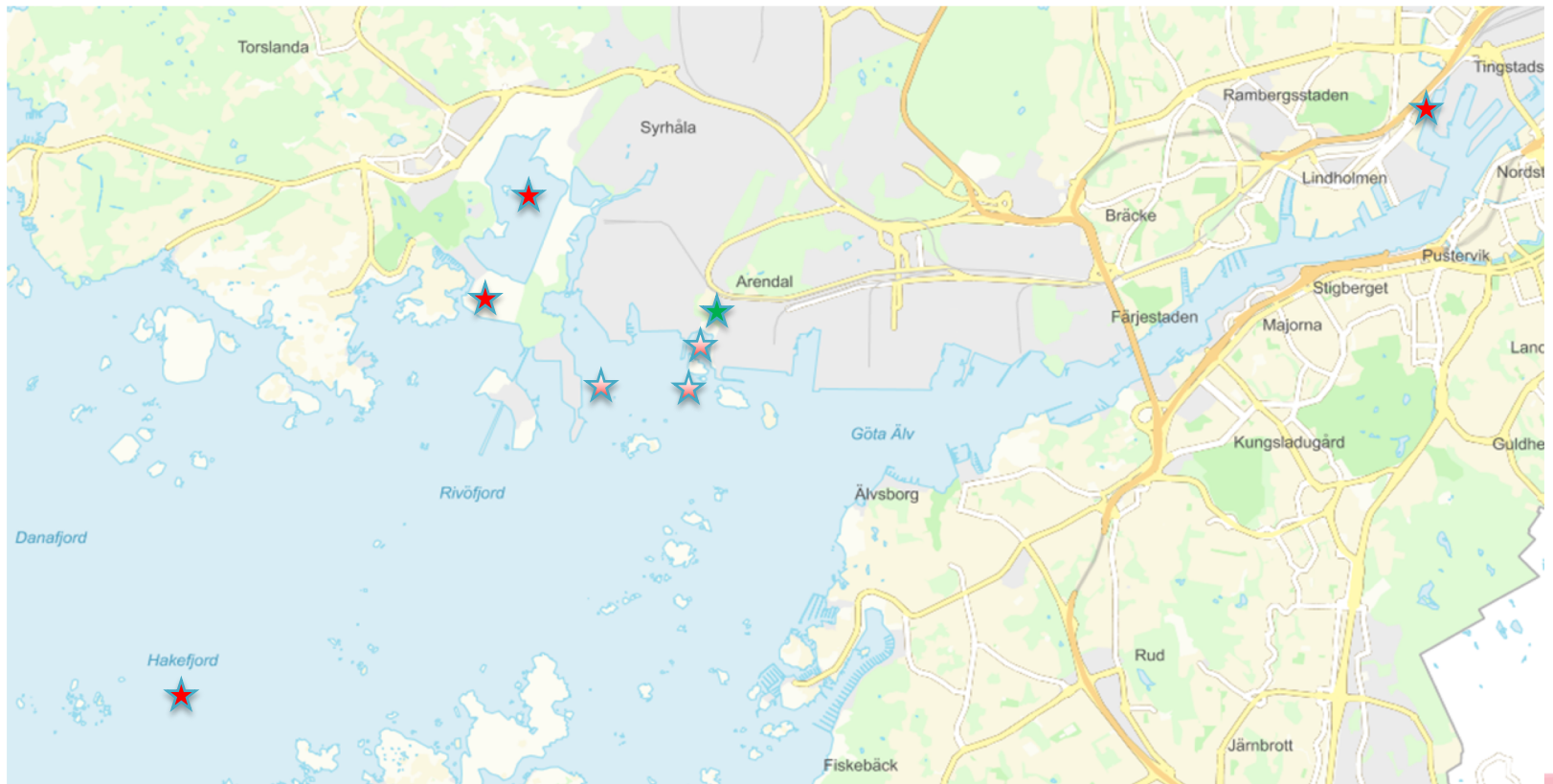


# Torsviken





# Our history of contaminated sediments





# Future strategy

- + S/S
- + Arendal
- + Risholmen

- + Export?
- + Land sites





# Upcoming challenges

- Our main pollution is still TBT
- The environmental permits



Thank you



# Lundbyhamnen

