

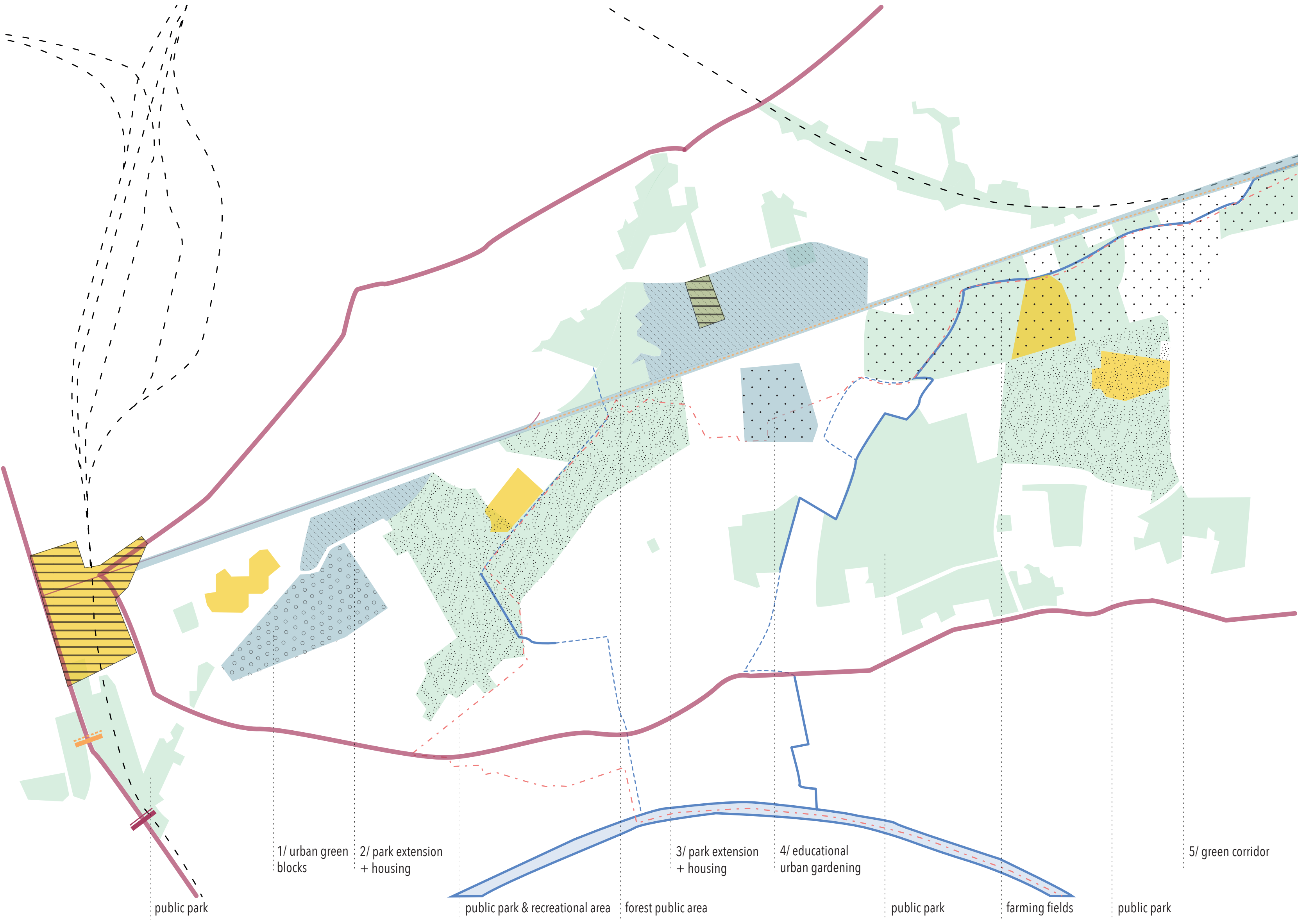
WILD WEST in the EAST

SINT AMANDSBERG - GREEN CLIMATE AXIS n° 2 - WESTVELD

Henri Lebbe, Cristina Rodríguez García, Jan Willem van Veelen

CORE IDEAS FOR THE DESIGN PROJECT

Development of the climate axis trough a mosaic strategy
Connect with surrounding green axes
Introduce a straight sustainable mobility axis with connection to different cities

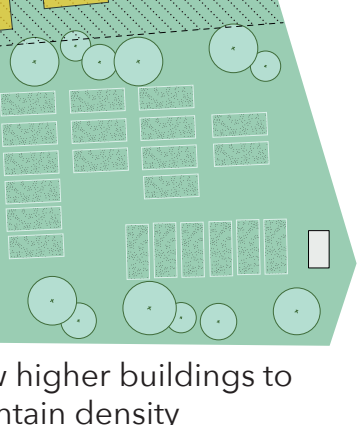
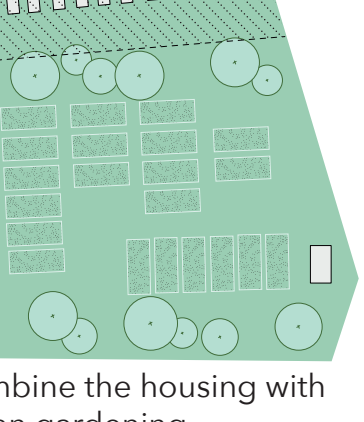
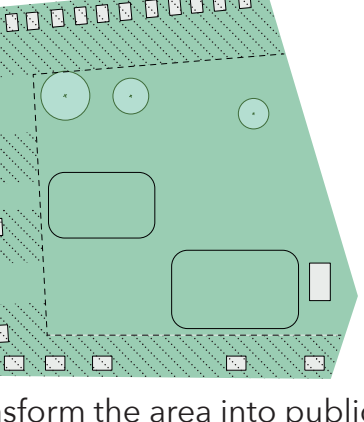
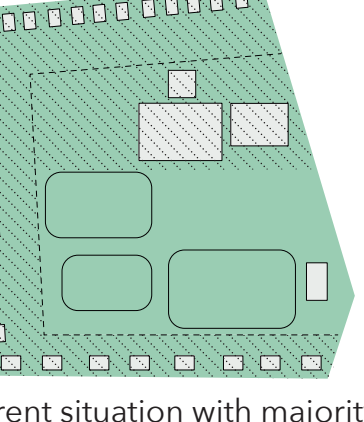
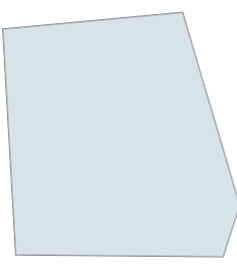


REFERENCES

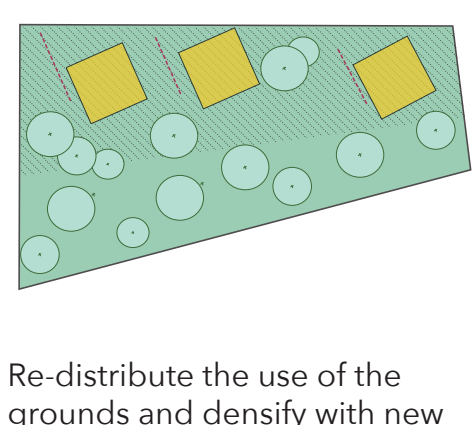
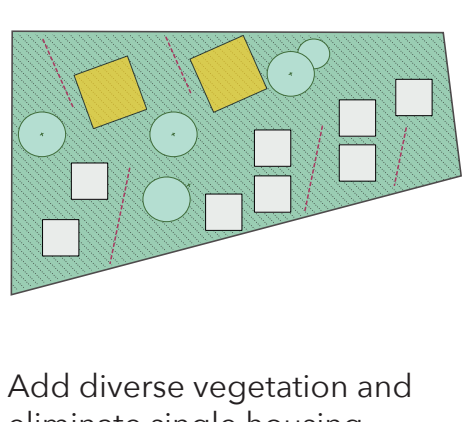
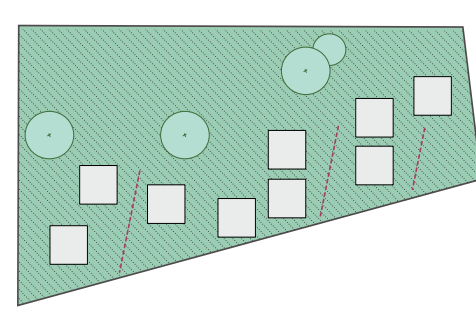
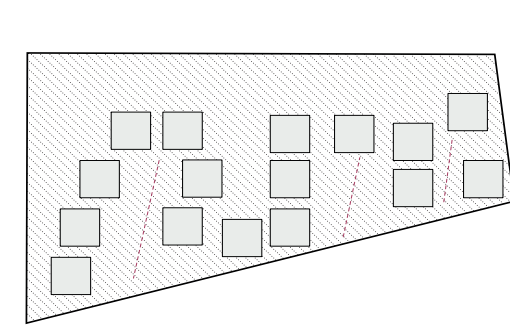
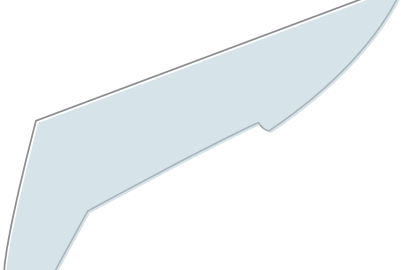


URBAN FABRIC STRATEGIES

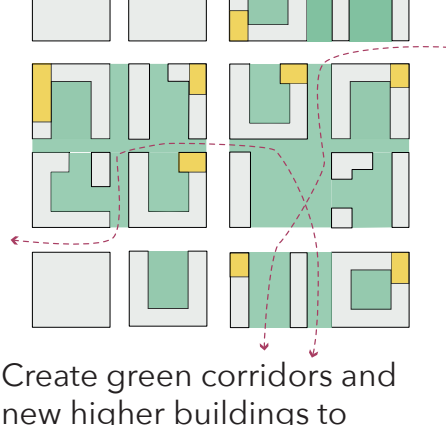
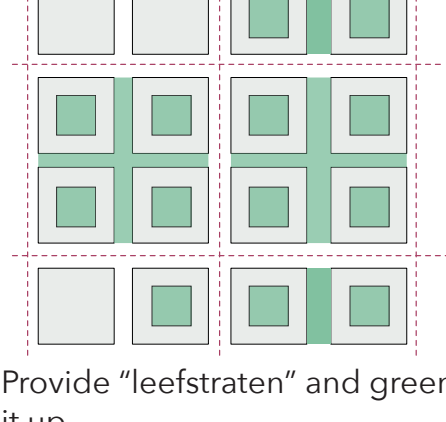
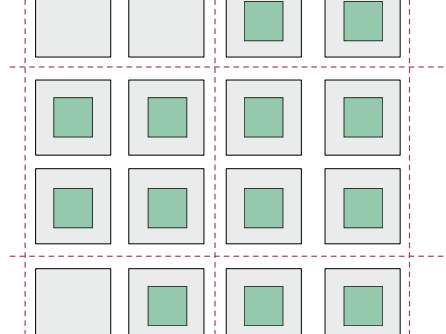
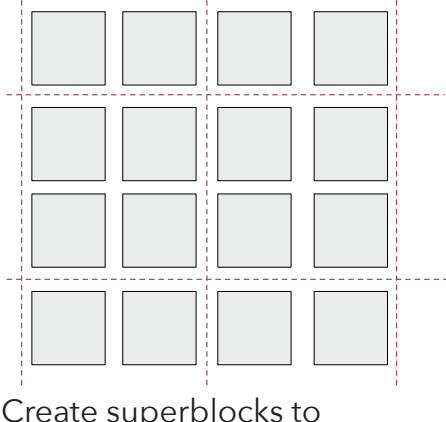
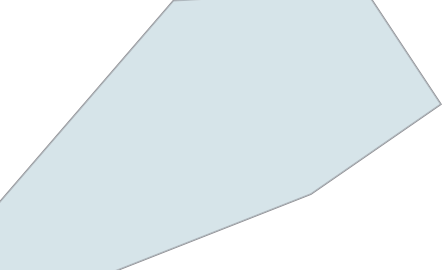
URBAN GARDENING



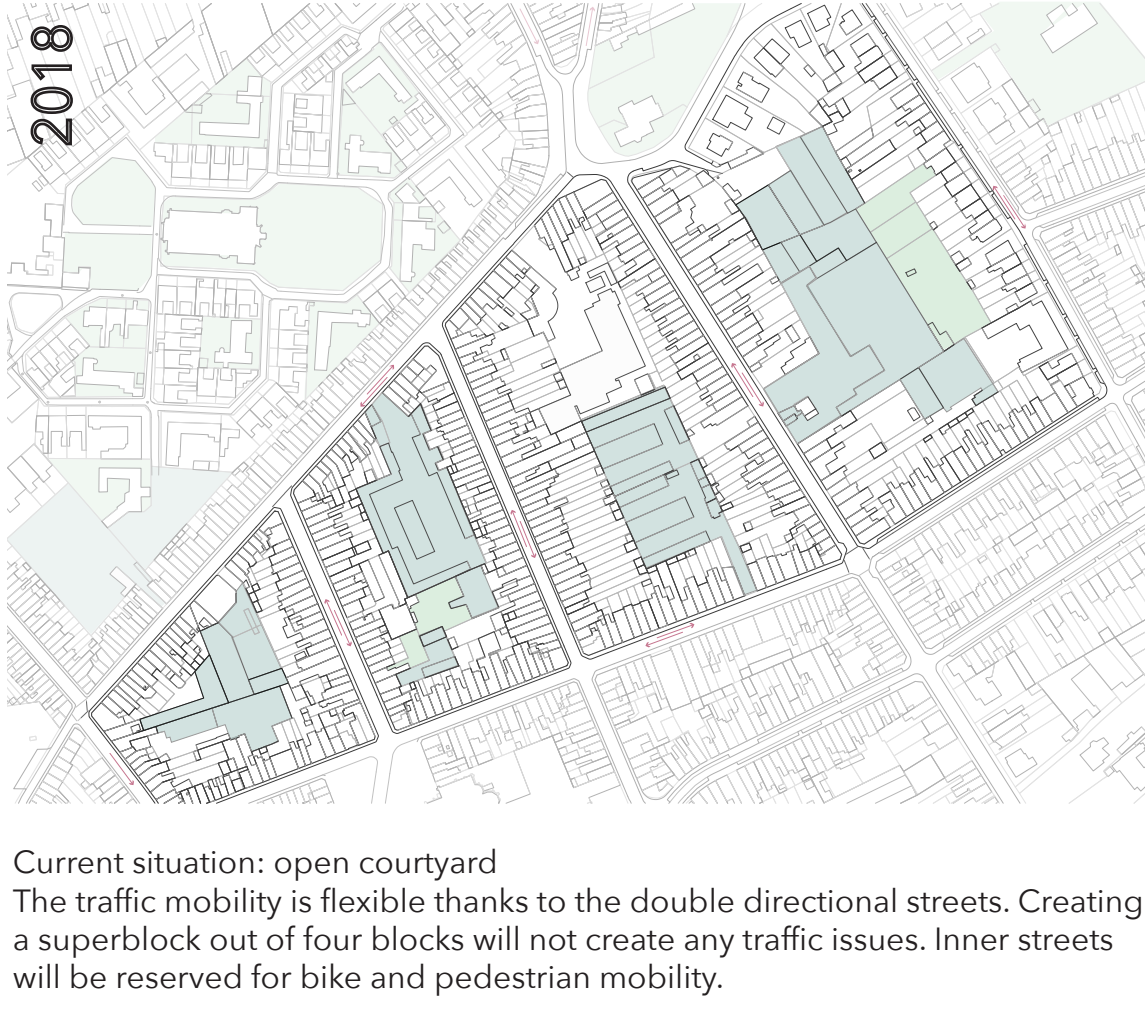
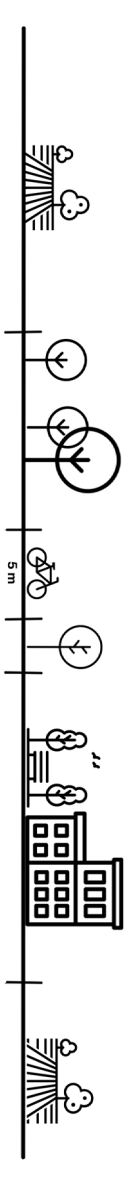
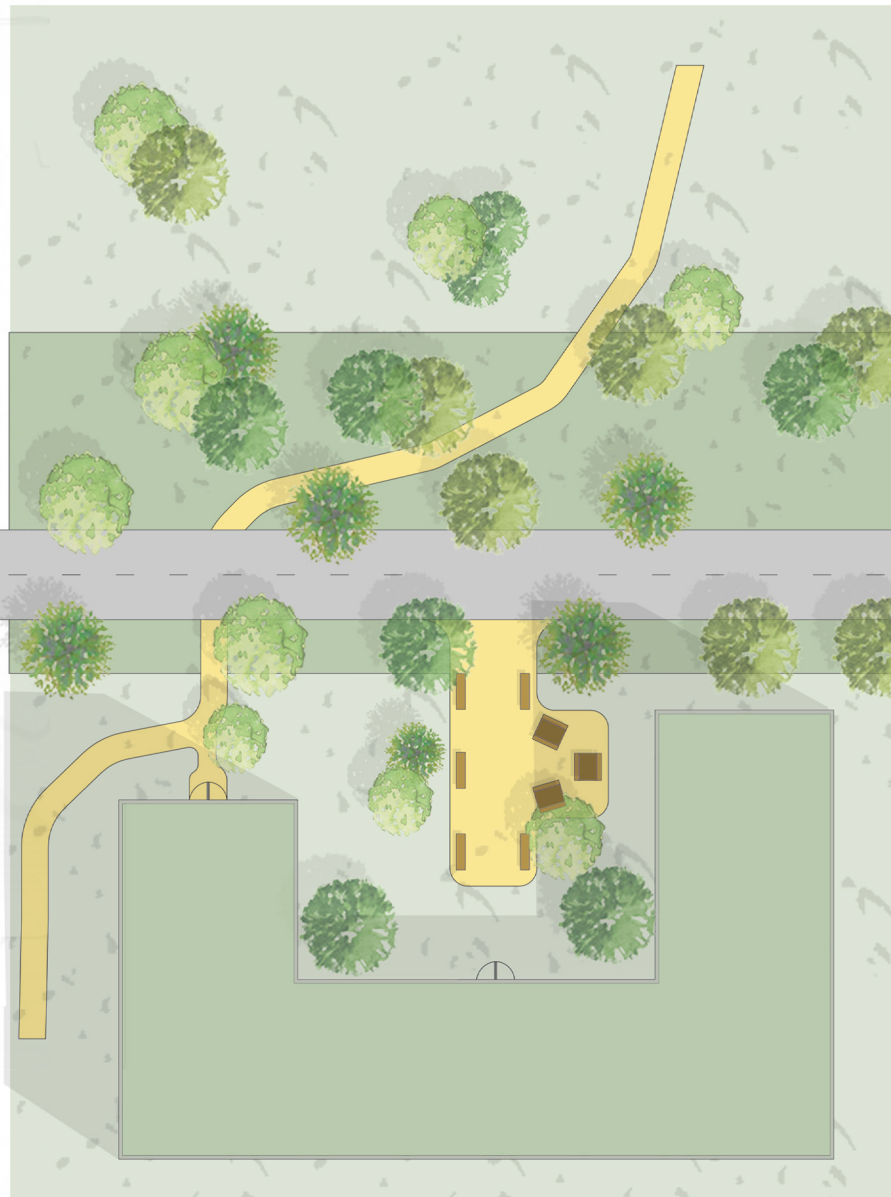
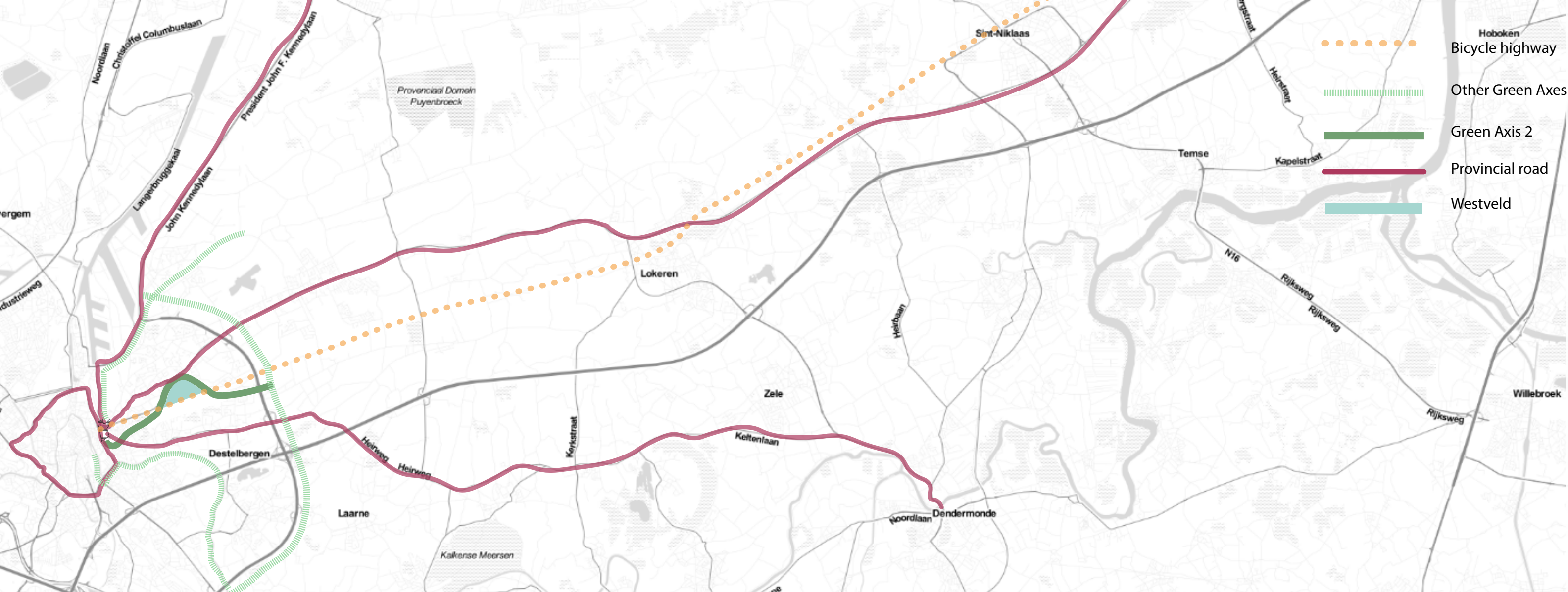
PARK EXTENSION + HOUSING



URBAN GREENING

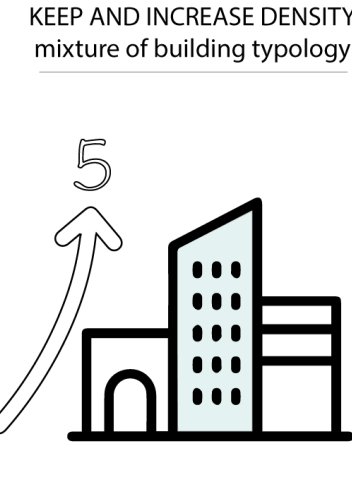
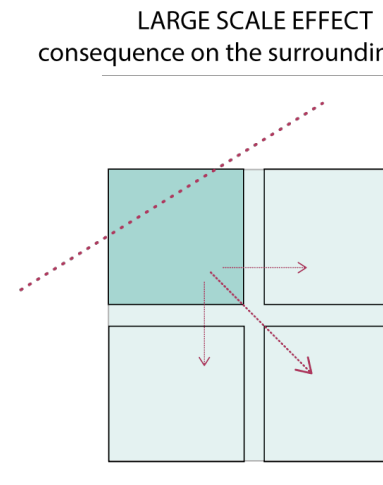
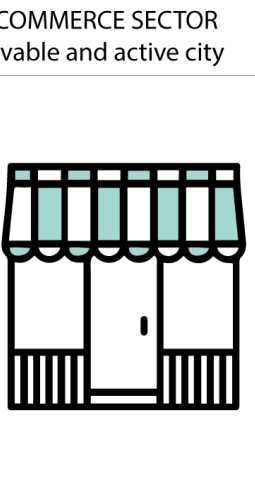
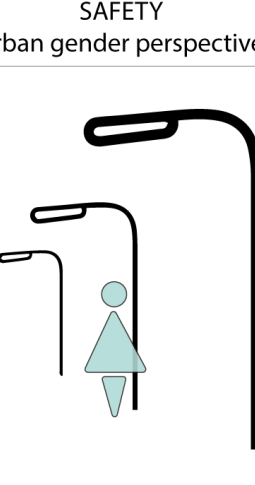
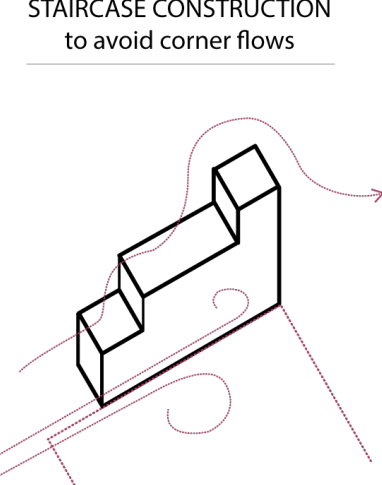
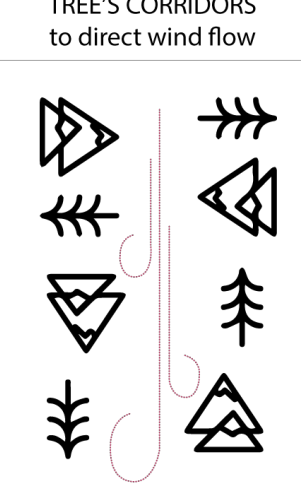
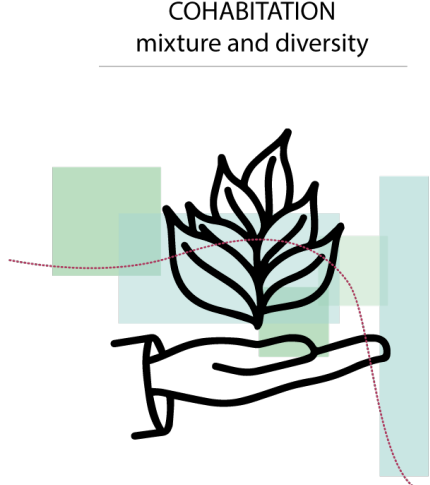
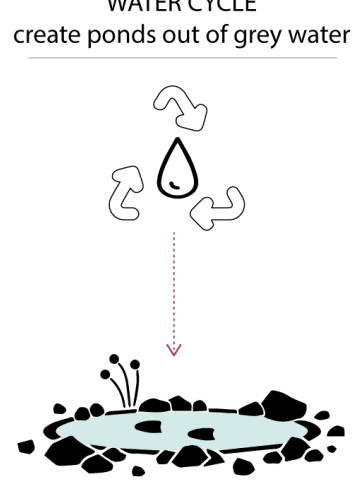


CONTEXT AND LARGER MOBILITY CONNECTIONS



DESIGN PRINCIPLES

Structural rules for the gradual urban transformation to the future



Create a sequence of public green spaces with introduction of five floor apartments to keep up density. Use a mixed vegetation to ensure fauna and flora diversity. Constitute ponds with the grey water of the housing. All together will help to re-direct the wind flows and cool them down to lower the heat island effect.

International summer school 'Green climate axes in Ghent'
27 August – 4 September 2018

