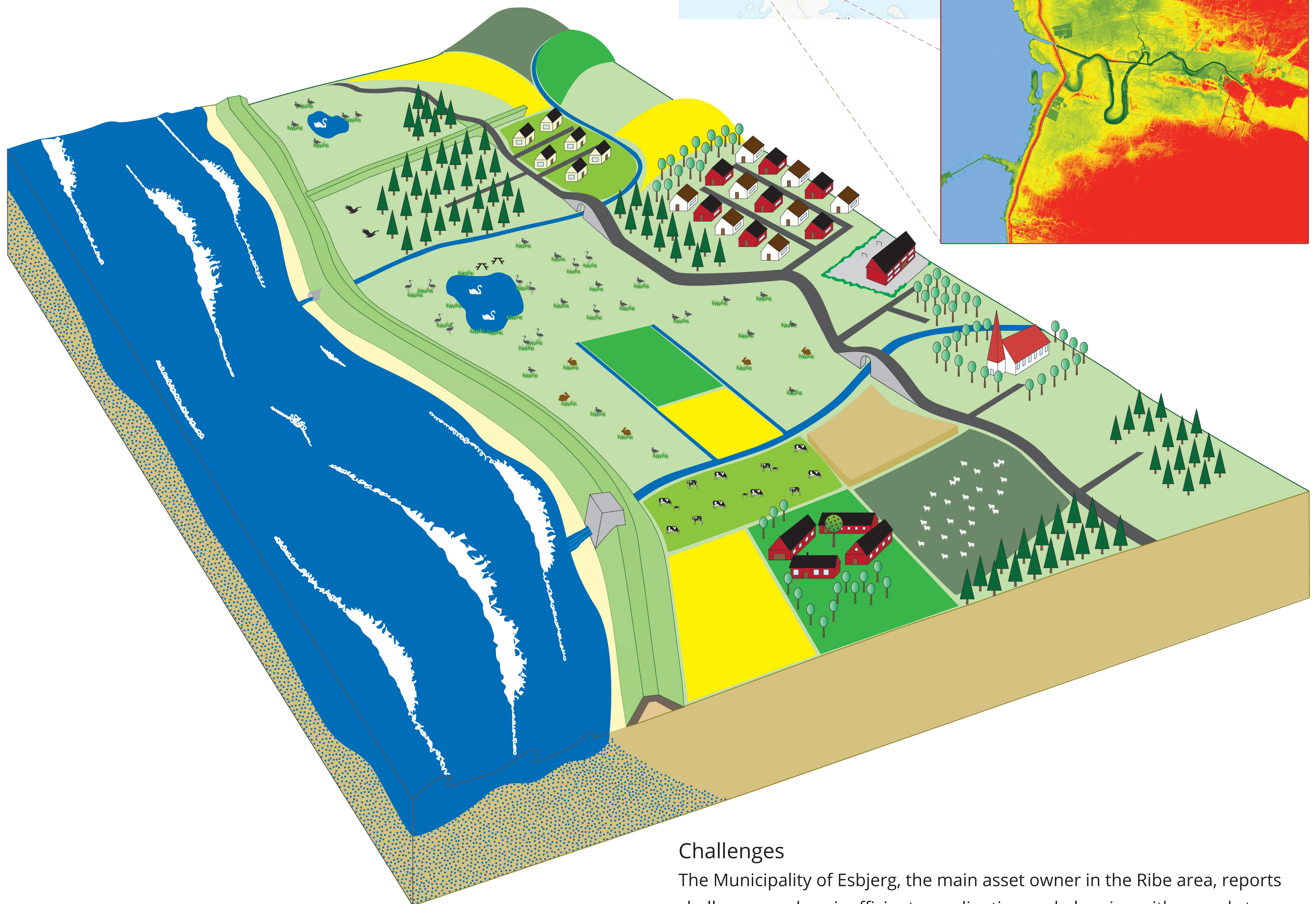
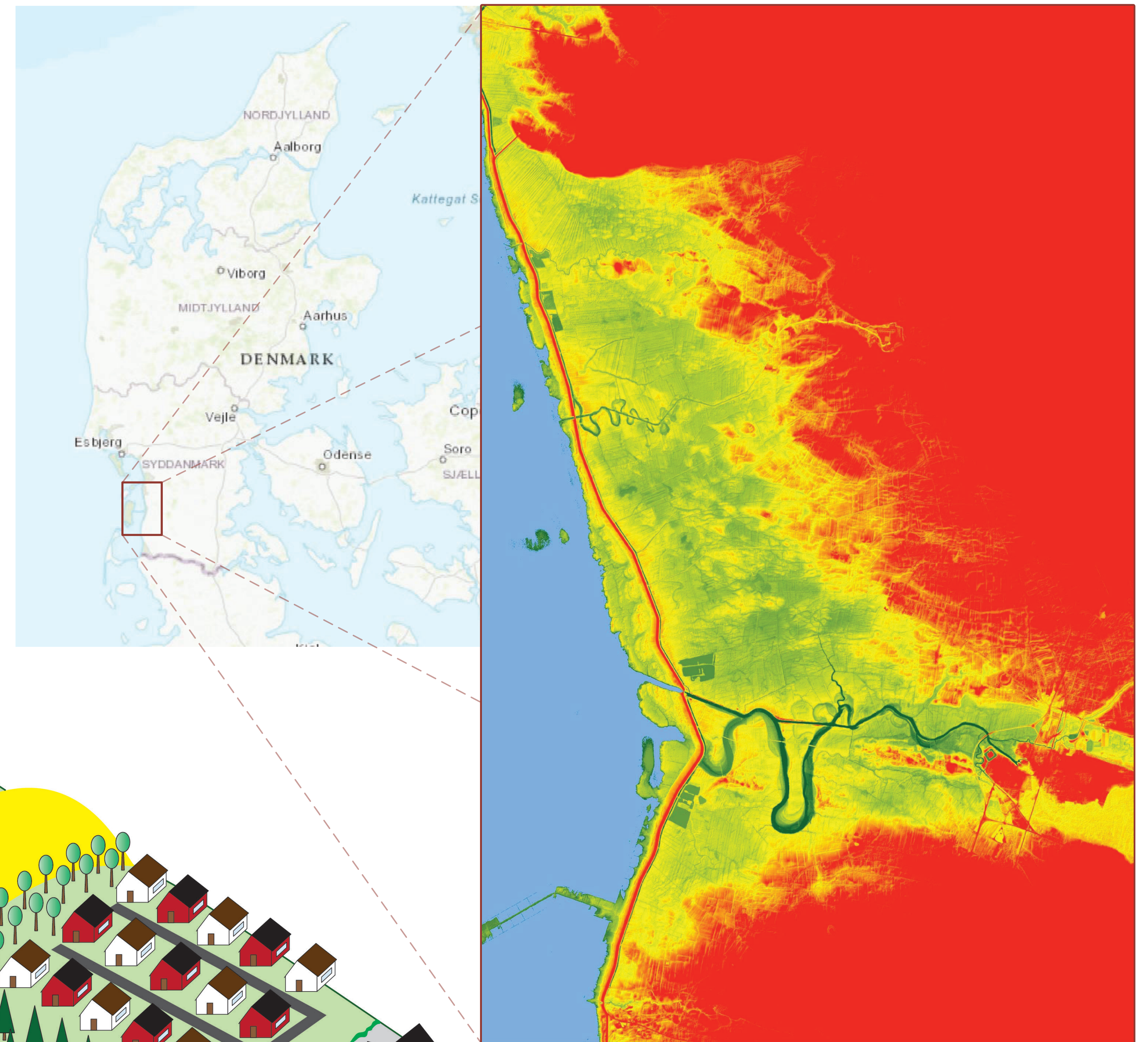


Ribe

Ribe is located on the Danish North Sea coast, approximately seven kilometres inland and is the oldest extant town in Scandinavia. Cultural heritage, infrastructure, residences, industry, UNESCO world heritage sites and numerous wildlife protection areas are all elements of this FAIR pilot site. The area between the North Sea and Ribe consists of moorlands and marshlands and is traversed by two small rivers, Ribe Å and Kongeåen. While the area surrounding Ribe comprises mostly of drained farmland lying between one and two metres above sea level, the town itself is located at an elevation of around two metres, with parts of the old town situated at up to about four metres above mean sea level.



Flood defence infrastructure

Several flood protection measures are implemented in and around the town, including a grass covered dike that follows the coastline. Sluices are located at the intersection of the two abovementioned rivers and the dike. The larger of the two structures, Kammerslusen, also functions as a lock for the Ribe Å waterway. Two other dewatering sluices can be found on the dike.

Challenges

The Municipality of Esbjerg, the main asset owner in the Ribe area, reports challenges such as inefficient coordination and planning with regards to maintenance and administration of flood defence infrastructure, which include the functionality of Kammerslusen, and the management of diverging stakeholder interests. Additionally, the flood defence system may lack robustness in the face of climate change, as shorter dewatering times at the sluices are expected in the future, coupled with increased discharge in the rivers.

New ideas and methods will be tested at this pilot site, where the FAIR team is working together with local stakeholders and providing tools for asset management and performance evaluation.

