

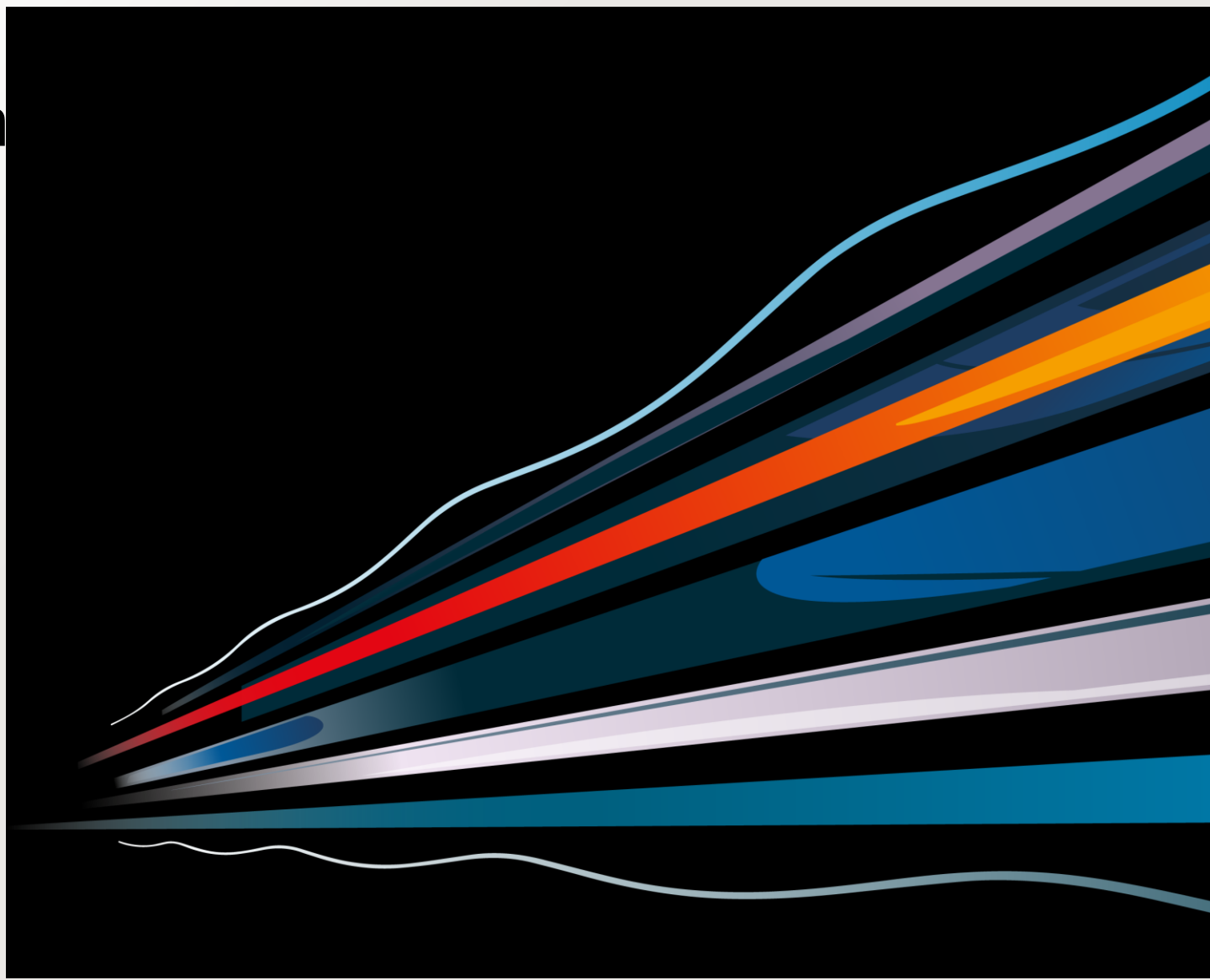


Kommunal- og
moderniseringsdepartementet

Where and when do n

Ingebjørg Fiskum

Oslo 23. januar 2017



Entrance point for project partners and FLCs

- Commission Regulations and rules, including program rules
- Fact sheets provide guidance on the interpretation of the rules and regulations



National rules – staff costs

Program rules for staff working full time on the project:
1720 hours per year

National rules may apply (such as for senior employes)



National rules – travel and accommodation

Main rule: Statens reiseregulativ

Note: Public transport is the main rule. Taxi requires special justification



National rules - VAT

Lov om kompensasjon av mva for kommuner, fylkeskommuner
mv



Public procurement – tender procedures

Note that program rules are more strict than national rules:

- *all contracts for any amount over €5,000 (excluding VAT)*
- *at least three offers are collected*
- *applicable to both public and private partners*

Note: new national rules from 1.1.2017

